

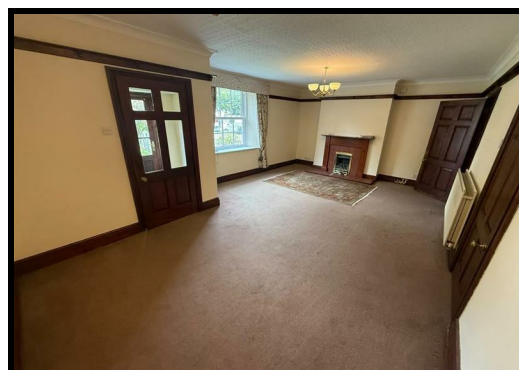


46 South Green, Staindrop, Darlington Offers In The Region Of £365,000

Situated in the charming village of Staindrop, this semi-detached house offers a wonderful opportunity for those seeking a peaceful yet vibrant community. Spanning an impressive 1,636 square feet, the property boasts three spacious reception rooms, providing ample space for both relaxation and entertaining. The three well-appointed bedrooms ensure comfort for family living, while the two bathrooms add convenience for busy mornings.

One of the standout features of this home is its picturesque setting, overlooking the serene South Green, which enhances the tranquil atmosphere of the property. The village of Staindrop is known for its friendly community and beautiful surroundings, making it an ideal place for families and individuals alike.

Offered for sale with no onward chain, this property presents a seamless transition for prospective buyers. Whether you are looking to settle down in a quaint village or seeking a sound investment, this home is sure to meet your needs. With its generous living space and delightful location, this semi-detached house is a rare find in the heart of Staindrop. Do not miss the chance to make this lovely property your own.



46 South Green, Staindrop, Darlington

General Remarks

Offered For Sale with NO ONWARD CHAIN

A truly outstanding opportunity has arisen to acquire a spacious three bedroom semi detached residence occupying a most pleasing position on South Green within the much sought after Village of Staindrop.

Gas fired central heating

UPVC double glazed windows throughout

Council Tax Band C

We welcome viewings at the earliest opportunity to avoid disappointment

Location

Staindrop is a highly regarded Village which is situated within the heart of the Durham Dales in County Durham. The Village benefits from a wealth of amenities including a superb Primary and Secondary school, a post office, and a number of shops and public houses/restaurants. The historic market Towns of Barnard Castle and Darlington are located within easy reach of Staindrop. Darlington has a direct train service to London Kings Cross in approximately 2 hours 20 minutes offering superb commuter access. Staindrop is also home to the Historic and most spectacular Raby Castle. The Castle is surrounded by 200 acres of lush green parkland, where herds of red and fallow deer live wild.

Entrance Porch Way

The property is entered through a wooden glazed door leading into an entrance porch way. The porch way benefits from a UPVC double glazed window.

Living Room

20'8" x 10'11"

The living room is situated to the front elevation of the property. Warmed by a central heating radiator, decorated in neutral tones and benefiting from a UPVC double glazed window and a feature fire surround.

Inner Passage Way

There is an inner passage way which is warmed by a central heating radiator. The inner passage way has a tiled floor, a cupboard providing useful storage and a door which leads out to the side elevation of the property.

Kitchen

11'10" x 14'7"

The Country style kitchen is fitted with a comprehensive range of wall, floor and drawer units with contrasting worktops incorporating a Belfast sink. The kitchen benefits from a tiled floor, a UPVC double glazed window overlooking the side elevation of the property and an Aga.

Dining Area

12'11" x 8'6"

The dining area has UPVC double glazed windows to the rear and side elevations. Warmed by a central heating radiator, tastefully decorated in neutral tones and benefiting from a tiled floor and a part glazed wooden stable door which leads out to the garden.

Snug / Home Office

5'10" x 7'1"

A versatile room warmed by a central heating radiator and benefiting from

a UPVC double glazed window. This room would make an ideal home office.

First Floor Landing

A staircase leads to the first floor landing.

Principal Bedroom

A double bedroom warmed by a central heating radiator, decorated in neutral tones and benefiting from a UPVC double glazed window overlooking the side of the property and an adjoining walk in dressing room and an En Suite shower room.

Walk in dressing room

9'10" x 6'6"

A walk in dressing area providing useful storage.

En Suite Shower Room

The en suite shower room is warmed by a central heating radiator, has vinyl flooring, a UPVC double glazed window and is fitted with a suite comprising of a shower cubicle with shower, a wash hand basin and a low level WC.

Bedroom Two

11'9" x 9'10"

A double bedroom with a UPVC double glazed window overlooking the front elevation of the property. Warmed by a central heating radiator, tastefully decorated in neutral tones and benefiting from a period stone fire place with an iron grate.

Bedroom Three

9'2" x 9'7"

A further double bedroom with a UPVC double glazed window overlooking the front elevation of the property. Warmed by a central heating radiator and tastefully decorated in neutral tones.

Bathroom

11'5" x 6'5"

The bathroom has vinyl flooring, a UPVC double glazed window overlooking the rear elevation and is fitted with a suite comprising of a corner bath, a shower cubicle with shower, a wash hand basin and a low level WC.

Externally

Externally to the front of the property there is a mature garden which is laid to lawn and complimented with an abundance of plants and shrubs. To the rear of the property there is a paved garden which has been designed for low maintenance.

