



7 High Row, Richmond

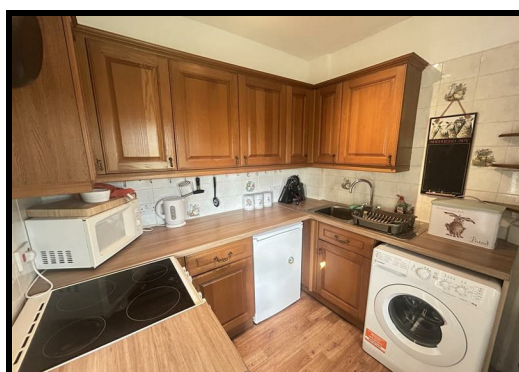
£635 Per Month

Nestled in the charming area of High Row, Caldwell, Richmond, this delightful one-bedroom house offers a perfect blend of comfort and character. As you step through the front door, you are welcomed into a cosy living room, ideal for relaxation or entertaining guests. The inviting atmosphere is enhanced by the thoughtful layout, making it a perfect retreat for individuals or couples.

The property features a well-appointed country kitchen, which is both functional and aesthetically pleasing. This space is perfect for preparing meals and enjoying casual dining. The bedroom is a tranquil haven, providing a peaceful space for rest and rejuvenation.

One of the standout features of this home is the private garden, offering a serene outdoor space to unwind. Whether you wish to enjoy a morning coffee in the sun or indulge in gardening, this garden provides a wonderful escape from the hustle and bustle of daily life.

This charming house in Caldwell is not just a property; it is a place to create lasting memories. With its inviting interiors and lovely outdoor space, it presents an excellent opportunity for those seeking a quaint home in a picturesque setting.



7 High Row, Richmond

General Remarks

Council Tax Band B

EPC Rating E

We welcome viewings at the earliest opportunity to avoid disappointment

Location

Sun flower cottage offers the most pleasing position within the desirable village of Caldwell. The village of Caldwell is home to the popular Brownlow Arms public house and restaurant. The village of Eppleby is just down the road and is built around two village greens (The Green and Low Green). The village has a superb community atmosphere and offers a good range of amenities including the Cross Keys public house, an award winning village shop and tea room and the village hall which regularly hosts various events including dances, meetings, badminton and salsa dance lessons. A wider range of amenities can be found within the historic market town of Richmond which is located seven miles away.

Living room

The well presented living room has fine views overlooking the village. Warmed by a electric radiator, tastefully decorated in neutral tones and benefiting from a double glazed window and a multi fuel log burning stove which heats the radiators in the property.

Kitchen

The kitchen is fitted with a comprehensive range of wall, floor and drawer units with contrasting worktops incorporating a sink and drainer. Warmed by a central heating radiator and benefiting from vinyl flooring, double glazed window to the front elevation and an electric oven and hob.

Master bedroom

A double bedroom warmed by a central heating radiator and benefiting from a double glazed window to the rear elevation of the property.

Bathroom

The bathroom has a tiled floor, a double glazed window to the rear elevation and is fitted with a suite comprising of a bath with over head shower, a wash hand basin and a low level WC.

Externally

Externally there a lovely garden which is laid to lawn and a patio area which is ideal for outdoor entertaining. The property also benefits from a shed which is ideal for storage.

