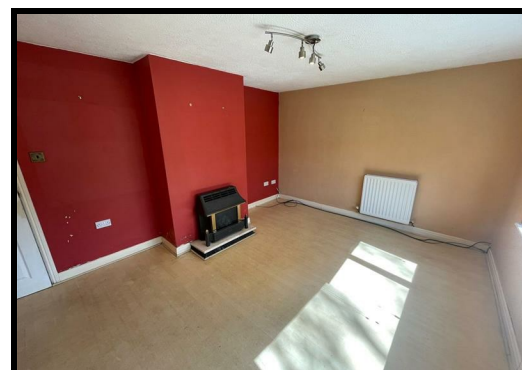




46 Bewick Crescent, Newton Aycliffe Offers In The Region Of £87,500

OFFERED FOR SALE WITH NO ONWARD CHAIN. A fantastic opportunity has arisen to purchase a two bed roomed mid terraced residence which is situated on Bewick Crescent in Newton Aycliffe. In brief the property is comprised of an entrance hallway, a living room, dining room, a kitchen, two double bedrooms and a family bathroom. Externally to the front of the property there is a forecourt garden which has been paved for low maintenance. To the rear of the property there is a large garden which is laid to lawn. Bewick Crescent is situated within a convenient location with easy accessibility to Newton Aycliffe Town centre. An ideal home for a first time buyer or an investor looking for a fantastic investment opportunity. We would recommend viewings at the earliest opportunity to avoid disappointment.



46 Bewick Crescent, Newton Aycliffe

General Remarks

Offered For Sale with NO ONWARD CHAIN

A fantastic opportunity has arisen to acquire a two bedroomed mid terraced house occupying a most pleasing position on Bewick Crescent in Newton Aycliffe.

Gas fired central heating

UPVC double glazing throughout

Council Tax band A

We recommend viewings at the earliest opportunity to avoid disappointment

Location

Bewick Crescent is situated in Newton Aycliffe a popular New town offering a range of amenities including shops, a wide choice of primary schools, two secondary schools and a Community College. For sporting enthusiasts there is a leisure centre which offers a swimming pool and a range of sports facilities. Darlington Town Centre and Durham City Centre both lie a short drive away. And with easy access to the A1(M) motorway as well as Teesside International Airport and the main East Coast Railway line, Newton Aycliffe is well placed for commuting purposes.

Entrance Hallway

The property is entered through a part glazed double glazed door leading into the entrance hallway. The hallway is warmed by a central heating radiator.

Living Room

11'5" x 15'9"

The living room has a UPVC double glazed window overlooking the front elevation of the property. Warmed by two central heating radiators and benefiting from wood effect laminated flooring, an electric fire and a marble hearth.

Dining Room

11'4" x 7'4"

The dining room is situated to the rear elevation of the property. Warmed by a central heating radiator, tastefully decorated in neutral tones and benefiting from UPVC double glazed French doors which lead out to the rear garden and a cupboard providing useful storage.

Kitchen

5'9" x 18'11"

The kitchen is fitted with a comprehensive range of wall, floor and drawer units with contrasting worktops incorporating a composite sink and drainer. The kitchen benefits from a tiled floor, a UPVC double glazed window, an integrated electric oven with a gas hob and overhead extractor hood and plumbing for an automatic washing machine.

First Floor Landing

A staircase leads to the first floor landing. The landing is warmed by a central heating radiator and benefits from a UPVC double glazed window.

Bedroom One

10'3" x 12'2"

A double bedroom with a UPVC double glazed window overlooking the front elevation of the property. Warmed by a central heating radiator and benefiting from two cupboards providing useful storage.

Bedroom Two

12'0" x 8'10"

A further double bedroom with a UPVC double glazed window overlooking the front elevation of the property. Warmed by a central heating radiator and benefiting from a cupboard providing useful storage.

Bathroom

The bathroom is warmed by a towel radiator, has a tiled floor and walls, a UPVC double glazed window, a cupboard providing useful storage and is fitted with a suite comprising of a bath with over head shower, a wash hand basin and a low level WC.

Separate WC

With a UPVC double glazed window and fitted with a low level WC.

Externally

Externally to the front of the property there is a forecourt garden which has been paved for low maintenance. To the rear of the property there is a large garden which is laid to lawn.

